

A New Genetic Based Multilayered Fuzzy Image Filter for Removing Additive Identical Independent Distribution Impulse Noise from Medical Images

A. Padma
Asst. Prof., IT
Velammal College
of Engg and Tech., Madurai.

Dr. R. Sukanesh
Professor, ECE,
Thiyagarajar College
of Engg. Madurai.

A. Santhana Vijayan
Lecturer ,CSE,
National Institute of
Technology, Tiruchy.

Abstract :- In this paper, we develop a multilayered genetic based fuzzy image filter, which consists of fuzzy number construction process, a fuzzy filtering process, a genetic learning process and an image knowledge base. The introduction of multilayered fuzzy systems substantially decreases the no of rules to be learnt. First, the fuzzy number construction process receives noise free image and sample images and then constructs an image knowledge base for the fuzzy filtering process. Second, the fuzzy filtering process contains a parallel fuzzy inference system, a fuzzy mean process, and a fuzzy decision process to perform the task of removing impulse noise. Finally, based on the genetic algorithm, the genetic learning process adjusts the parameters of image knowledge base. Based on the criteria of Peak Signal to Noise Ratio (PSNR), Mean Square Error (MSE) and Mean Absolute Error (MAE), Genetic based fuzzy image filter achieves a better performance .

Keywords: Parallel fuzzy inference system, fuzzy number, genetic algorithm, impulse noise, tuning, learning.

Programming Languages : Math Lab Tool, Fuzzy Tool, Gene Tool

Fig 1. Luminance fuzzy variable with five linguistic terms

x_1	x_2	x_3					
x_2	x_1	x_3					
x_3	x_3	x_3					

Fig 2. An 8- neighborhood

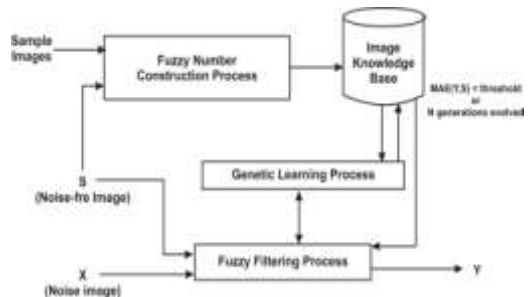


Fig 3. Structure of GBFIF

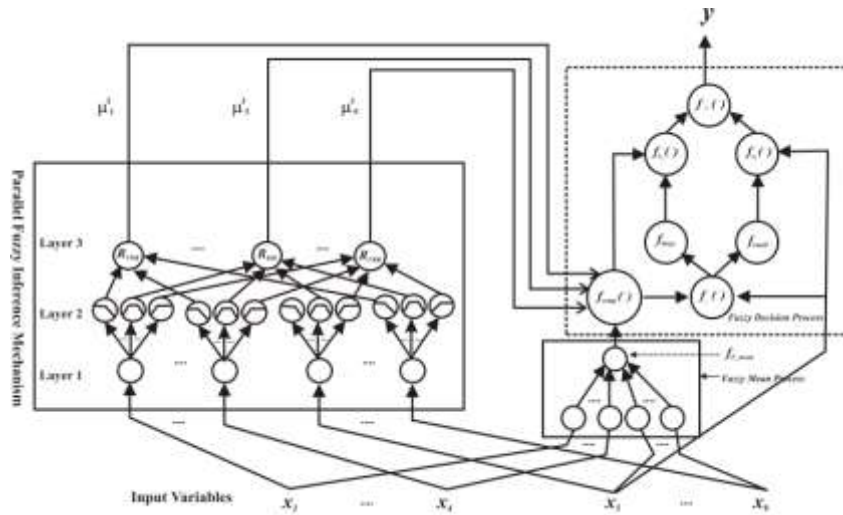


Fig. 4 Architecture of the fuzzy filtering process

1. INTRODUCTION

Now a days, many image processing algorithms cannot work well in a noisy environment, therefore the image filter is used as a preprocessing module for highly corrupted images or noisy images. A no. of approaches have been developed for impulse noise removal.

The Median Filter [1] can achieve good performance for low corrupted images but it will not work efficiently, when the noise rate is above 0.5. The center weighted Median Filter[2] is a special case of WM filter uses a set of parameters to control the filtering performance in order to preserve more signal details. The novel switching based Median 'Filter with fuzzy set concept [3] called the Noise Adaptive Soft Switching Median [NASM] filter to achieve a better performance in removing impulse noise. The Median Rational Hybrid Filter [MRHF] [4] that is based on the CWM filter for removing additive impulse noise. The proposed signal dependent rank ordered mean [SDROM] [5] filter uses highly corrupted images while preserving details and features. The Weighted Fuzzy Mean Filter[6] has a better ability to remove high impulse noise, when the noise rate is above 0.5. The Adaptive Weighted Fuzzy Mean Filter [AWFM][7] not only improves the filters capability in a low noisy environment but also retains its capability of processing in the heavily noisy environment. An intelligent fuzzy image filter [FIF] [8] can authentically decide the number of

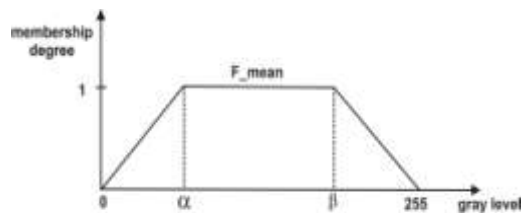


Fig. 5 Fuzzy interval F_{mean} for fuzzy mean process

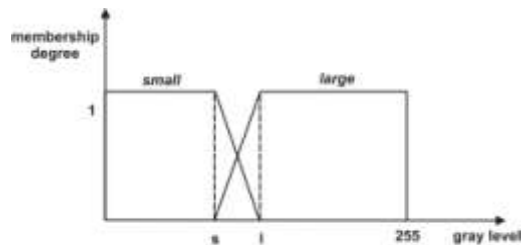


Fig. 6. Fuzzy sets for luminance difference fuzzy variable

fuzzy numbers based on image features to overcome the drawbacks of the AWFM filter. The proposed [9] hybrid neuro fuzzy filter has specifically designed to detect different patterns of noisy pixels occurring in highly corrupted images.

The proposed filters are able to yield an effective noise cancellation and to get a better performance that is better than other approaches. The Histogram[10] based fuzzy filter which is particularly effective at removing highly impulse noise while preserving image details.

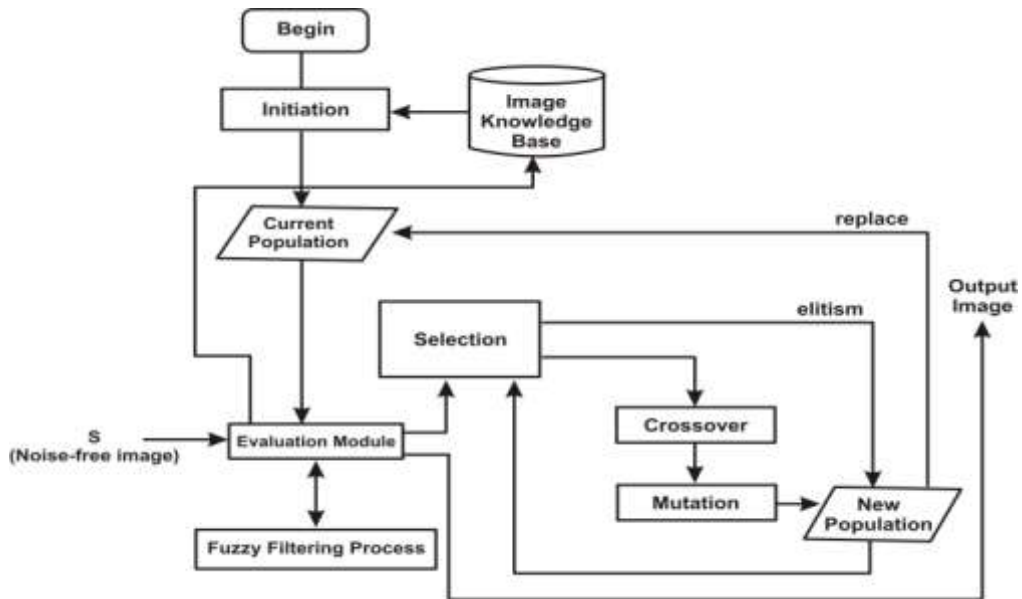


Fig. 9 Structure of Genetic learning process

2. STRUCTURE OF GENETIC BASED MULTILAYERED FUZZY IMAGE FILTER

We propose a Genetic based multilayered fuzzy image filter to remove impulse noise from highly corrupted images. Fig.3 shows the structure of Genetic based multilayered fuzzy image filter

There are 3 main processes, including a fuzzy number construction process, a fuzzy filtering process, and a genetic learning process. In addition, the image knowledge base should be constructed before performing the fuzzy filtering process, we use the trapezoidal function to be membership functions of fuzzy sets. Equation (1) denotes the membership function $f_A(x)$ of fuzzy set A

$$f_A(x) = \begin{cases} 0, & x < a_A \\ \frac{(x-a_A)}{(b_A-a_A)}, & a_A \leq x < b_A \\ 1, & b_A \leq x < c_A \\ \frac{(d_A-x)}{(d_A-c_A)}, & c_A \leq x < d_A \\ 0, & x \geq d_A. \end{cases} \dots\dots (1)$$

The trapezoidal membership function of fuzzy set A is denoted by the parameter set $A = [a_A, b_A, c_A, d_A]$. Fig.2 illustrates and example five linguistic terms VDK, DK, MED, BR, VBR are used to represent fuzzy luminance variable. The membership degree is a value in the range [0,1] where 1 denotes free membership and '0' denotes no membership.

The image knowledge base consists of the parameters of the membership functions. In this paper, we define the five fuzzy sets for a image including Very Dark (VDK), Dark (DK), Medium (MD), Bright (BR) and Very Bright (VBR). The membership function of fuzzy sets VDK, DK, MD, BR and VBR denoted as $VDK = [a_{VDK}, b_{VDK}, c_{VDK}, d_{VDK}]$ $DK = [a_{DK}, b_{DK}, c_{DK}, d_{DK}]$ $MD = [a_{MD}, b_{MD}, c_{MD}, d_{MD}]$ $BR = [a_{BR}, b_{BR}, c_{BR}, d_{BR}]$ and $VBR = [a_{VBR}, b_{VBR}, c_{VBR}, d_{VBR}]$ respectively. The fuzzy sets describing of a noise free image can be derived from the histogram of the source image. Then the algorithm for fuzzy number construction process is as follows

Algorithm for fuzzy number construction process:

Input :

The histogram of sample image or noise free image

Output:

The parameter set of membership functions.

Method:

Step 1: Decide the overlap ranges of fuzzy sets.
Let S_k be the k_{th} gray level of image s and g_k be the number of pixels with the K_{th} gray level in S .

Step 1.1: Set C_{VDK} be the first S_k such that $g_k > 0$,
 $a_{DK} \leftarrow C_{VDK}$

Step 1.2: Set b_{VDR} be the last S_k such that $g_k > 0$
 $d_{BR} \leftarrow b_{VBR}$

Step 1.3 : Set $IR \leftarrow [Cb_{VBR}-C_{VDK}] / 2 * NF - 3$ Where IR denoted the value of the interval Range between b_{VBR} and C_{VDK} , N_f is the number of fuzzy sets and $N_f \geq 2$

Step 1.4 : Set $a_{VDK} \leftarrow 0$, $b_{VDK} \leftarrow 0$

Step 1.5 : Set $C_{VBR} \leftarrow (2 * N_f - 1) * IR$, $d_{VBR} \leftarrow C_{VBR}$

Step 2: Decide the parameter values of the membership function f_{VDK} of fuzzy set V_{DK} : $d_{VDK} \leftarrow C_{VDK} + IR$

Step 3: Decide the parameter values of the membership function f_{DK} of fuzzy set DK by the following steps

Step 3.1: Set $b_{DK} \leftarrow d_{VDK}$

Step 3.2: Set $C_{DK} \leftarrow IR + b_{DK}$

Step 3.3: Set $d_{DK} \leftarrow IR + C_{DK}$

Step 4: Decide the parameter values of membership function f_{MD} of fuzzy set MD by the following steps

Step 4.1: Set $a_{MD} \leftarrow C_{DK}$

Step 4.2: Set $C_{MD} \leftarrow d_{DK}$

Step 4.3: Set $C_{MD} \leftarrow IR + b_{MD}$

Step 4.4: Set $d_{MD} \leftarrow IR + C_{MD}$

Step5: Decide the parameter values of the membership function f_{BR} of fuzzy set BR by the following steps

Step 5.1: Set $a_{BR} \leftarrow C_{MD}$

Step 5.2: Set $b_{BR} \leftarrow d_{MD}$

Step 5.3: Set $C_{BR} \leftarrow IR + b_{BR}$

Step 6 : Decide the parameter values of membership function f_{VBR} of fuzzy set VBR by the following

Step 6.1 : $a_{VBR} \leftarrow C_{BR}$

Step 7: Stop

3. Parallel fuzzy Inference mechanism for fuzzy filtering process

In this section, we will describe the parallel fuzzy inference mechanism for the fuzzy filtering process. We adopt the 8 neighborhood of an image for the filter. Fig 2 illustrates the neighborhood of in an image. Fig. 4 shows the fuzzy filtering process for impulse noise removal.

The fuzzy filtering process consists of a parallel fuzzy inference mechanism, a fuzzy mean process, and a fuzzy decision process. Now, we describe them as follows.

3.1. A Parallel Fuzzy Inference Mechanism

The structure of parallel fuzzy inference mechanism consists of three layers. There are three kinds of nodes in this structure, including the fuzzy linguistic node for the fuzzy linguistic layer, the fuzzy term node for the fuzzy term layer, and the rule node for the fuzzy rule layer. A fuzzy linguistic node represents a fuzzy variable, a fuzzy term node represents the mapping degree of the fuzzy variable. A rule node represents a rule and decides the final firing strength of that rule during inferring . Now we briefly describe each layer as follows.

Table 1 Parameters of fuzzy set constructed by GBFIF for Salt and Pepper Noisy CT image with a Corruption Rate 0.4

	Before tuning			After tuning		
	[a,b,c,d]	Fuzzy Rules	δ	[a,b,c,d]	Fuzzy Rules	δ
VDK	[0,0,25,55]	[1,1,1,1,1,1,1,1,1]	1	[0,0,15,67]	[0,1,0,1,1,1,1,1,1]	2
DK	[25,55,85,115]	[1,1,1,1,1,1,1,1,1]	1	[35,82,83,112]	[1,1,1,1,1,0,0,1,1]	1
MD	[85,115,145,175]	[1,1,1,1,1,1,1,1,1]	1	[84,112,134,168]	[1,1,0,0,0,1,0,0,1]	0.5
BR	[145,175,205,235]	[1,1,1,1,1,1,1,1,1]	1	[140,172,174,216]	[1,1,1,0,1,0,1,0,1]	0.5
VBR	[205,235,255,255]	[1,1,1,1,1,1,1,1,1]	1	[174,229,249,255]	[0,1,0,0,1,1,1,1,1]	0.5
l	72			60		
α	25			33		
β	235			224		

3.1.1. Layer 1 (Fuzzy linguistic layer) :

The fuzzy linguistic nodes in this layer directly transmit input values to the next layer. If the input vector is $x = (x_1, x_2, \dots, x_9)$ then x_i is denoted as the input value of the i th pixel in the neighborhood. Then the output for this layer will be

$$\mu^1 = (x_{11}, x_{12}, x_{13}, x_{14}, x_{15}), (x_{21}, x_{22}, x_{23}, x_{24}, x_{25}), \dots (x_{91}, x_{92}, x_{93}, x_{94}, x_{95}) \quad (2)$$

Where x_{ij} is the out value of the j th fuzzy linguistic term for i th pixel.

3.1.2. Layer2 (Fuzzy Term Layer):

Each fuzzy variable of the second layer is represented with a condition code. Each of the outputs of the condition code is connected to rule nodes in the third layer to constitute a condition specified in some rules. This layer is used to compute matching degrees. If the input vector of this layer is $\mu^1 = ((x_{11}, x_{12}, x_{13}, x_{14}, x_{15}), (x_{21}, x_{22}, x_{23}, x_{24}, x_{25}), \dots, (x_{91}, x_{92}, x_{93}, x_{94}, x_{95}))$

Then the output vector will be is

$$\mu^2 = ((fA_1(x_{11}), (fA_2(x_{12}), \dots, (fA_3(x_{15})), (fA_1(x_{21}), (fA_2(x_{22}), \dots, (fA_5(x_{25})), \dots (fA_1(x_{91}), (fA_2(x_{92}), \dots, (fA_5(x_{95}) \dots (3)$$

where $fA_j(x_{ij})$ is the membership degree of the j th fuzzy term for the i th pixel.

Layer 3 (Fuzzy Rule Layer):

The third layer is called the rule layer, where each node is a rule to represent a fuzzy rule. The links in this layer are used to perform precondition matching of fuzzy logical rules. Each linguistic term of every fuzzy rule contains binary weights $\{W_{ij}\}$, where $i = 1, 2, 3, \dots, 9$ and $j = 1, 2, \dots, 5$. The fuzzy inference rules are denoted as follows

Rule VDK : If (x_1 is VDK with weight W_{11}) AND (x_2 is VDK with weight W_{21}) AND (x_9 is VDK with weight W_{91}) THEN μ_1^3 is VDK.

..
..

Rule VBR : If (x_1 is VBR with weight W_{15}) AND (x_2 VBR with weight W_{25}) AND AND (x_9 is VBR with weight W_{95}) THEN μ_5^3 is VBR.

Equation (4) shows the computing mechanism for the output μ_j^3 of fuzzy rule Layer, where $j = 1, \dots, 5$ and we have

$$\mu_j^3 = \begin{cases} \frac{\sum_{i=1}^n (x_{ij} f_{A_j}(x_{ij})) \times w_{ij}}{\sum_{i=1}^n f_{A_j}(x_{ij}) \times w_{ij}}, & \text{if } \left(\sum_{i=1}^n f_{A_j}(x_{ij}) \times w_{ij} \right) > 0 \\ 0, & \text{otherwise.} \end{cases} \quad (4)$$

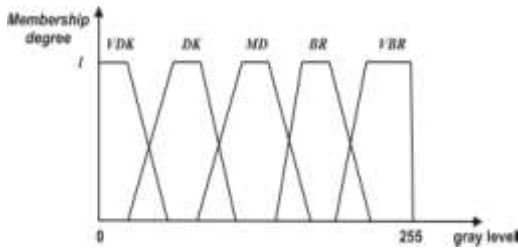


Fig. 10 a) Fuzzy sets of the "CT" image constructed by the fuzzy number construction process.

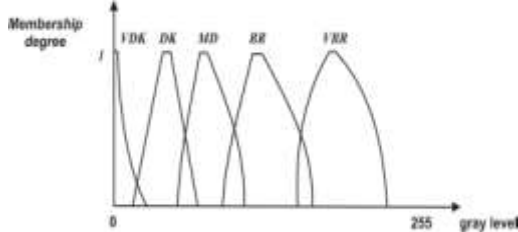


Fig. 10 b) Tuned fuzzy sets by the fuzzy filtering process and the genetic learning process.

B. Fuzzy Mean Process :

The fuzzy mean process performs the fuzzy mean of input variables. Equation (5) denotes the computing process with the fuzzy interval F_{mean} for the fuzzy mean process.

$$F_{mean} = \begin{cases} \frac{\sum_{i=1}^n (F_{F_{mean}}(x_i) \times x_i)}{\sum_{i=1}^n F_{F_{mean}}(x_i)}, & \text{if } \left(\sum_{i=1}^n F_{F_{mean}}(x_i) \right) > 0 \\ 0, & \text{otherwise} \end{cases} \quad (5)$$

Where $f_{F_{mean}} = [0, \alpha, \beta, 255]$ shown in Fig.5.

C. Fuzzy Decision Process

In fuzzy decision process two membership functions f_{large} and f_{small} are utilized.

$$f_{small} = [0, 0, s, 1]$$

$$f_{large} = [s, 1, 255, 255].$$

The parameters s and 1 for fuzzy sets small and large are designed as follows

$$S = 1 \times f_{F_{mean}}(x_5)$$

f_{small} , f_{large} define the detail preserving process of the filter. It basically executes full correction of large amplitude noise pulses, partial correction of median

amplitude pulses, and no correction of small amplitude noise pulses. The function $f(\cdot)$ can be interpreted as a measure function of the correction process. If this measure is large, a full correction is allowed. If this measure is small, the correction is further reduced in order to better preserve the quality of fine details and textures

$$F_{comp}(\mu_1^3, \mu_2^3, \mu_2^3, \mu_4^3, \mu_5^3, y_{mean}^3) = \mu_j^3$$

(i.e., $\mu_j^3 - y_{mean}$ be the minimum value for $j=1,2,3,4,5$)

$$f_{comp(\cdot)} = \min ((\mu_1^3 - y_{mean}), (\mu_2^3 - y_{mean}), (\mu_3^3 - y_{mean}), (\mu_4^3 - y_{mean}), (\mu_5^3 - y_{mean}))$$

$$f(\cdot) = | f_{comp}(\cdot) - x_5 |$$

$$f_{x1}(\cdot) = f_{comp}(\cdot) \times f_{large}(f(\cdot))$$

$$f_{x2}(\cdot) = x_5 \times f_{small}(f(\cdot))$$

$$f_+(\cdot) = f_{x1}(\cdot) + f_{x2}(\cdot)$$

4. Genetic learning process for GBFIF

This section will introduce the genetic learning for the fuzzy image filter. We adopt a supervised learning method based on the genetic learning for the GBFIF system. We apply the learning approach to learn the image knowledge base containing image DB stored in the parameters of fuzzy sets and image RB stored in the parameters of fuzzy rules.

Now we describe main components of image knowledge base as follows. The three components of the image knowledge base to be enclosed are the membership functions of the fuzzy variables, fuzzy rules, and the linguistic modifiers of the linguistic terms. Fig.7 shows the chromosome that composed of following sub parts : CS_a , CS_{b1} , CS_{b2}

1. CS_a is a 23 gene that encodes the parameters of fuzzy sets.
2. CS_{b1} is a group of nine genes that directly encode the binary weights $\{ w_{ij} \}$ where $i=1 \dots 9$ and $j=1 \dots 5$ for of the set of binary weights.

Fuzzy Rules:

Rule VDK : IF (X3 IS VDK AND X4 IS VDK AND X6 IS VDK) THEN μ_1^3 IS VDK

Rule VBR : IF (X2 IS VBR AND X3 IS VBR AND X6 IS VBR AND X8 IS VBR) THEN μ_5^3 IS VBR

3. CSb₂ is a five gene that encodes the linguistic modifiers of the linguistic terms.

The factors of the luminance are the fuzzy linguistic terms VDK,DK,MD,BR AND VBR. In this paper, we define the encoding restrictions for the fuzzy variable as follows

$$\begin{aligned} a_{VDK} &\leq b_{VDK} \leq c_{VDK} < d_{VDK} \\ a_{DK} &\leq b_{DK} \leq c_{DK} < d_{DK} \\ a_{MD} &< b_{MD} \leq c_{MD} < d_{MD} \\ a_{BR} &< b_{BR} \leq c_{BR} < d_{BR} \\ a_{VBR} &< b_{VBR} \leq c_{VBR} \leq d_{VBR} \\ c_{VDK} &< a_{DK} \leq d_{VDK} < b_{DK} \\ c_{DK} &\leq a_{MD} \leq d_{DK} < b_{MD} \\ c_{MD} &\leq a_{BR} \leq d_{MD} < b_{BR} \\ c_{BR} &< a_{VBR} \leq d_{BR} < b_{VBR} \end{aligned}$$

These restrictions make the tuning range large to improve the training efficiency for the image knowledge base, but the above restrictions are not suitable to train the membership functions of luminance. The luminance is a variable for the images, it may be VDK , DK, MD, BR or VBR. Thus the linguistic term VDK of the luminance may be located at different gray levels for a different chromosome. By using Adaptive Restriction algorithm, that can solve this problem. The Adaptive Restriction Algorithm for the fuzzy variable luminance is as follows

Adaptive Restriction Algorithm

Set the Adaptive Restrictions of fuzzy variable luminance for genetic tuning.

Input:

The chromosome from the gene populations.

Output:

The restriction set of the linguistic terms of the luminance.

Method:

Step 1: Retrieve the parameters of the luminance from the chromosome.

Step 1.1: $[G_{VDK-l}, G_{VDK-hl}, G_{VDK-hr}, G_{VDK-r}] \leftarrow [a_{VDK}, b_{VDK}, c_{VDK}, d_{VDK}]$

Step 1.2: $[G_{DK-l}, G_{DK-hl}, G_{DK-hr}, G_{DK-r}] \leftarrow [a_{DK}, b_{DK}, c_{DK}, d_{DK}]$

Step 1.3: $[G_{MD-l}, G_{MD-hl}, G_{MD-hr}, G_{MD-r}] \leftarrow [a_{MD}, b_{MD}, c_{MD}, d_{MD}]$

Step 1.4: $[G_{BR-l}, G_{BR-hl}, G_{BR-hr}, G_{BR-r}] \leftarrow [a_{BR}, b_{BR}, c_{BR}, d_{BR}]$

Step 1.5: $[G_{VBR-l}, G_{VBR-hl}, G_{VBR-hr}, G_{VBR-r}] \leftarrow [a_{VBR}, b_{VBR}, c_{VBR}, d_{VBR}]$

Step 2: Sort the positions of linguistic terms mountain values
(i.e.,) $(G_{VDK-hl} + G_{VDK-hr}) / 2$, $(G_{DK-hl} + G_{DK-hr}) / 2$, $(G_{MD-hl} + G_{MD-hr}) / 2$, $(G_{BR-hl} + G_{BR-hr}) / 2$, $(G_{VBR-hl} + G_{VBR-hr}) / 2$

Step 2.1: min \leftarrow the linguistic term with minimum mountain value

Step 2.2: med-min \leftarrow the linguistic term with med – minimum mountain value

Step 2.3: med \leftarrow the linguistic term with medium – mountain value.

Step 2.4: med – max \leftarrow the linguistic term with medium – maximum mountain value.

Step 2.5: max \leftarrow the linguistic term with maximum mountain value.

Step 3: Generate the adaptive dynamic restrictions as follows

Step 3.1: Generate the restriction
 $G_{min-l} \leq G_{min-hl} \leq G_{min-hr} \leq G_{min-r}$

Step 3.2: Generate the restriction
 $G_{med-min-l} < G_{med-min-hl} \leq G_{med-min-hr} < G_{med-min-r}$

Step 3.3: Generate the restriction
 $G_{med-l} < G_{med-hl} \leq G_{med-hr} < G_{med-r}$

Step 3.4: Generate the restriction

$$G_{\text{med-max-l}} < G_{\text{med-max-hl}} \leq G_{\text{med-max-hr}} < G_{\text{med-max-r}}$$

Step 3.5: Generate the restriction

$$G_{\text{max-l}} < G_{\text{max-hl}} \leq G_{\text{max-hr}} \leq G_{\text{max-r}}$$

Step 4: End.

Next, a linguistic modifier used in the image knowledge base is a function with the parameters $\hat{\rho}$ that alter the membership functions. Two of the most well known modifiers are erosion linguistic modifier “very” ($\hat{\rho}=2$) and the dilation linguistic modifier “more or less” ($\hat{\rho}=0.5$).

$$\mu_{\text{very}}(x) = (\mu(x))^2$$

$$\mu_{\text{moreorless}}(x) = (\mu(x))^{0.5}$$

The initial population for the gene pool is composed of four groups with the same number cs_a part and $cs_{b1}+cs_{b2}$ part

- (1) Composed of original cs_a part and the original $cs_{b1}+cs_{b2}$
- (2) Composed of original cs_a part and the randomized $cs_{b1}+cs_{b2}$ part
- (3) Composed of randomized cs_a part and the original $cs_{b1}+cs_{b2}$ part
- (4) Composed of randomized cs_a part and the randomized $cs_{b1}+cs_{b2}$ part

Next, we describe genetic operator as follows: The genetic learning process initiates the population by the encoding schema and restrictions and then records the initial population as the current population. The chromosome in the current population is evaluated by the fitness function. If the evaluation does not suit the fitness function, the genetic learning processes the generation. The elitism is used in the learning process. In the beginning of selection, the best two chromosomes in the current population are selected as a new population without crossover and mutation. After the elitism, we produce other population by means of reproduction, crossover, mutation operators. The one point cross over method is adopted and the crossover point is randomly placed. The mutation process is applied to each offspring after the crossover. In this part, the cs_a part and $cs_{b1}+cs_{b2}$ part are mutated based on the encoded restrictions of fuzzy variable, binary weight, and the set {0.5, 1, 2} respectively. The objective function f , which measures the fitness of each individual based an

Mean Absolute Error (MAE) between processed image and the original noise free image.



Fig 11) a)

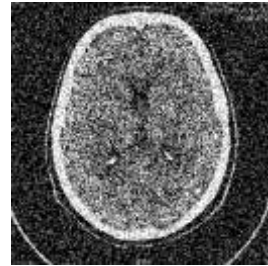


Fig 11) b)



Fig 11) c)

Fig 11. (a) –(c) shows the noise free CT image, noisy CT image with a corruption rate 0.4 and result image by GBFIF respectively.

$$F = \frac{\sum_{n=1}^N \sum_{m=1}^M |y(n,m) - s(n,m)|}{N \times M}$$

Where $N \times M$ is the number of processed pixels. The learning process stops when an assigned number of generations has been evolved or when a satisfactory value of fitness has been obtained.

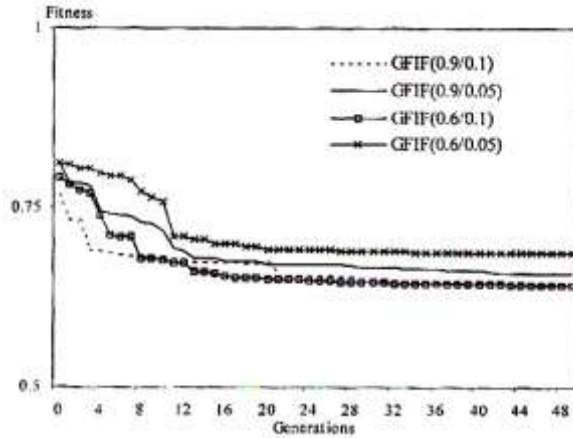


Fig 12 a) Values of fitness obtained during the learning process and effects of different choices of genetic parameters for CT image

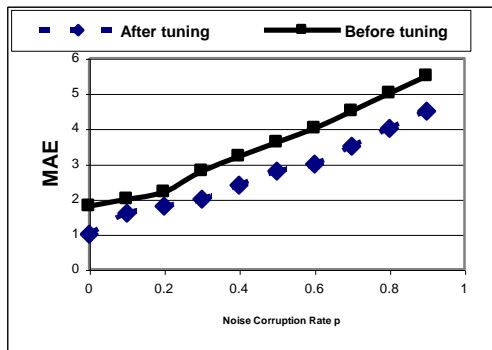


Fig 12 b) MAE curves of GBFIF before turning and after tuning on the CT image corrupted by salt-and-pepper impulse noises with the noise corruption rate p, where p = 0 to 0.9.

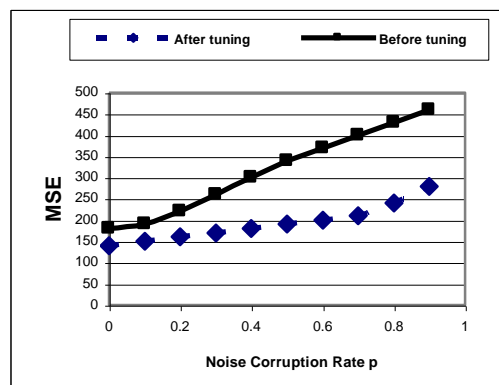


Fig 12 c) MSE curves of GBFIF before turning and after tuning on the CT image corrupted by salt-and-pepper impulse noises with the noise corruption rate p, where p = 0 to 0.9.

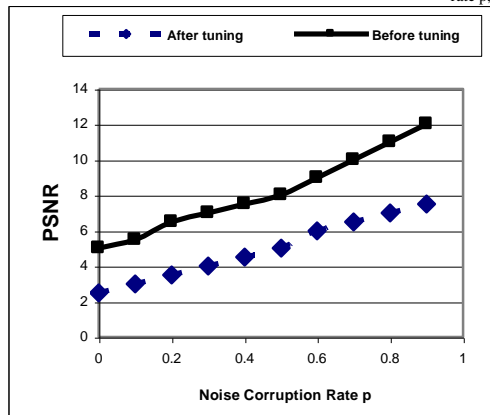


Fig 12 d) PSNR curves of GBFIF before turning and after tuning on the CT image corrupted by salt-and-pepper impulse noises with the noise corruption rate p, where p = 0 to 0.9

5. Experimental Results:

We adopt the CT image to be the sample image for the fuzzy number construction process to construct image knowledge base. In addition, we also produce a salt and pepper noisy CT image with a corruption rate 0.4 for the fuzzy filtering process and genetic learning process. We have chosen a small population of 20 individuals and set the parameters of genetic learning as follows: Cross over probability 0.6, Mutation rate 0.1 and 50 generations.

Fig. 11(a)-(c) shows the noise free CT image, noisy CT image with a corruption rate of 0.4 and resulting CT image by GBFIF respectively.

Table 1 shows the parameters of fuzzy set constructed by GBFIF for salt and pepper noisy CT image with a corruption rate 0.4. Fig. 12.a. shows the values of fitness obtained during the learning process and effects of choices of genetic parameter for CT image fig.12.(b) shows the MAE curves of GBFIF before tuning and after tuning on the CT image corrupted by salt and pepper noise with the noise corruption rate p where $p = 0$ to 0.9. Fig.12.c. shows the MSE curves of GBFIF before tuning and after tuning on the CT image corrupted by salt and pepper impulse noise with the noise corruption rate p where $p = 0$ to 0.9. Fig.12.d. shows the PSNR curves of GBFIF before tuning and after tuning on the CT image corrupted by salt and pepper impulse noise with the noise corruption rate p where $p = 0$ to 0.9.

Conclusion :

In this paper, a genetic based, multilayered fuzzy image filter has been presented. GBFIF contains four parts, including a fuzzy number construction process, a fuzzy filtering process, a genetic learning process and an image knowledge base to perform efficient and effective impulse noise removal. The fuzzy number construction process receives sample images or the noise free image and then constructs the image knowledge base for the filter. Then the fuzzy filtering process refers to the fuzzy knowledge base to execute the fuzzy inference. Since it is used to remove noise without degrading image structure, and to preserves the quality of fine details and textures. The genetic learning process adjusts the parameters for fuzzy sets for getting the optimal

knowledge base. From the experimental results, based on the criteria of PSNR, MSE, MAE, GBFIF achieve the most effective result than other approaches for removing heavily corrupted additive identical independent distribution impulse noise from highly corrupted images. In the future, we will extend GBFIF to process other medical images.

References:

- [1] K.Arakawa, "Median filter based on fuzzy rules and its application to image restoration. "Fuzzy Sets Syst., vol. 77, pp.3-13,1996.
- [2] S.J.Ko and S.J. Lee, "Center weighted median filters and their applications to image enhancement", IEEE Trans. Circuits Sys., Vol.15, No. 9, pp. 984-993, Sep. 1991.
- [3] H.L. Eng and K.K. Ma, "Noise adaptive soft-switching median filter," IEEE Trans, Image Process., Vol. 10,no.2.pp 242-251, Feb.2001
- [4] L.Khriji and M.Gabbouj, "Median-rational hybrid filters," in Proc. Int. Conf. Image Process, Chicago, IL, 1998, pp. 853-857.
- [5] E.Abreu and S.K. Mitra, "A signal-dependent rank ordered mean (SD-ROM) filter, "in proc. IEEE Int. Conf. Acoust., Speech, Signal process., Detroit, MI, 1995,pp.2371-2374.
- [6] C.S. Lee, Y.H. Kuo, and P.T. yui, "Weighted fuzzy mean filters for image processing "Fuzzy sets Syst., vol.89, pp157-180,1997.
- [7] Y.H. Kuo, C.S.Lee, and C-L.Chen, "High-stability AWFm filter for signal restoration and its hardware design," fuzzy Sets Sys., vol. 114,no,2 .pp. 185-202,2000
- [8] C.S Lee, Y.d. kuo, "Intelligent fuzzy image filter for impulse noise removal" in proc, IEEE Int. Conf. Fuzzy Syst., Vol. 1, May 2002, pp. 431-436.
- [9] F.Russo, "Hybrid neuro-fuzzy filter for impulse noise removal," Pattern Recognition., vol.32, pp.1843-1855,1999.

- [10] J.H. Wange, Wang, W.J. Liu, and L.D. Lin, "Histogram-based fuzzy filter for image restoration," *IEEE Trans. Syst., Man, Cybern, B*, vol.32, no.2, pp.230-238, Apr. 2002.
- [11] R.Lukac."Adaptive vector median filtering," *Pattern Recognition Letters.*, vol. 24, pp. 1899-1899,2003.
- [12] J.Y. Chang and J.L. Chen, "Classified-augmented median filters for image restoration," *IEEE Trans, Instrum., meas.*, vol 53, no.2 pp-351-356, Apr.2004.
- [13] O. Cordon, F. Herrera, and P.Villar, "Generating the knowledge base of a fuzzy rule-based system by the genetic learning of the data base," *IEEE Trans. Fuzzy Syst.*, vol. 9, no.4 pp-667-674. Aug 2001.