

Intelligent Refrigerator with Monitoring Capability through Internet

G. Subramanya Nayak
Department of E & C Engineering,
Manipal Institute of Technology
Manipal University
Manipal -576104

Gangadhar
Department of E & C Engineering
Mangalore Institute of Technology &
Engineering
Moodabidri, Mangalore

Puttamadappa C
Department of E & C Engineering
SJB Institute of Technology
Uttarahalli Road, Kengeri
Bangalore -60

ABSTRACT

In conventional or standard refrigerator there is no system of automatically monitoring the materials or food items and also it will not replace immediately. An intelligent refrigerator is one which possesses self monitoring capability of food item or material with minimal or no human intervention. Such a product should have the capability of automatically detecting and alerting the consumer of the need to restock or replenish dwindling supplies. In our system the refrigerator automatically keeps the track of the amount of empty space, and therefore indirectly the amount of items in refrigerator compartments. The system will automatically inform the owner about the status of the refrigerator through short message service (SMS) and also shop owner through the fast Ethernet network. The system also has LCD display screen and buzzer on the door of the refrigerator. LCD display screen displays the message when the items are over and at the same time buzzer is on, which indicates to home members about the stock of the refrigerator

1. INTRODUCTION

This project is mainly focused on designing and intelligent refrigerator which finds out the stock of the material present in it and then automatically places order for the nearest on line shop via internet using IEEE 802.3U Ethernet technology if the stock is below threshold. This system is uses few volume sensors that monitors the stock level of the items in the refrigerator. If the item below the threshold level ARM processor sends the message to the super market computer through the Ethernet adapter that is connected to the ARM processor through the RS232 interface. This unit is also having LCD display unit for user interface. In the supermarket computer there will be software that will be running in the computer that connects to such refrigerator and whenever send a request to the supermarket computer then it pops up a message informing the request sent by the refrigerator.

2. PROCEDURE

This is an intelligent refrigerator. This consists of three sensors. Each sensor represents each item (Ex: Tomato, milk, fruits). Each sensor consist an IR sensor and is kept in a particular threshold level of the item. When the level of the item goes below the threshold level, sensor sends the signal to ARM Processor.

The Bloak diagram of our approach is given in Figure 1.

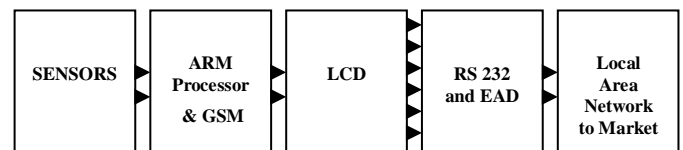


Fig 1. Block diagram of Intelligent Refrigerator system

Volume sensor is made up of infra red sensor using LM555 timer. It consists of IR emitter and detector circuit. IR emitter circuit is made up of LM555 timer working as astable multivibrator. IR detector circuit is also made of LM555 timer working as monostable multivibrator.

The LM555 is a highly stable device for generating accurate time delays or oscillation. Additional terminals are provided for triggering or resetting if desired. In the time delay mode of operation, the time is precisely controlled by one external resistor and capacitor. For astable operation as an oscillator, the free running frequency and duty cycle are accurately controlled with two external resistors and one capacitor. The circuit may be triggered and reset on falling waveforms, and the output circuit can source or sink up to 200mA or drive TTL circuits.

For generating 38 KHz frequency of IR ray 555 timer working as a astable multivibrator to avoid the other ray. If the output is high initially, capacitor C starts charging towards Vcc through RA and RB. As soon as the voltage across the capacitor becomes equal to $2/3V_{cc}$, the upper comparator triggers the flip-flop, and the output becomes low. The capacitor now starts discharging through RB and transistor Q1. When the voltage across the capacitor becomes $1/3V_{cc}$, the output of the lower comparator triggers the flip-flop, and the output becomes high. The cycle then repeats. Internal diagram of LM 555 is shown in Figure 2.

IR emitter circuit and its output voltage waveform is shown in Figures 3 and 4.

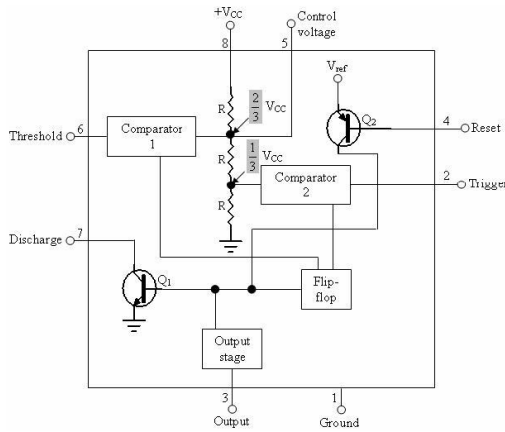


Fig2. Internal diagram of LM 555

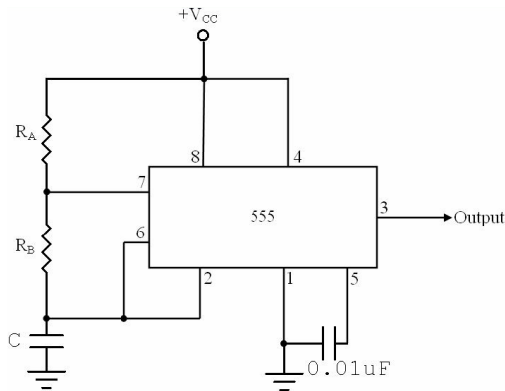


Fig 3. IR emitter circuit

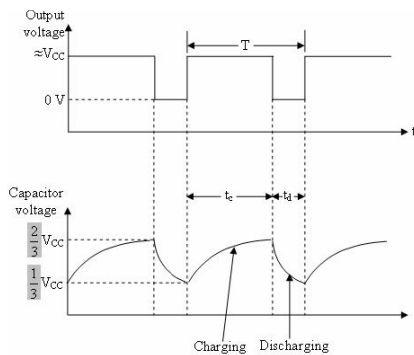


Fig 4. Output voltage and waveform

IR detector circuit and its output voltage waveform is shown in Figures 5 and 6.

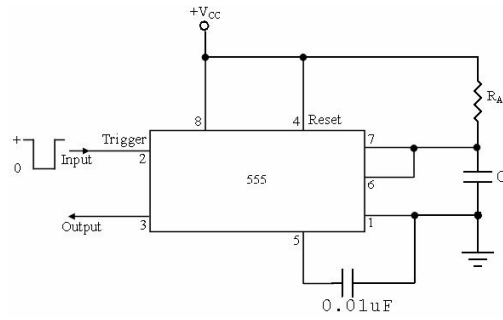


Fig 5. IR detector theoretical circuit diagram

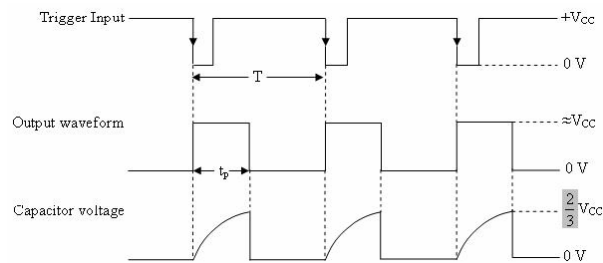


Fig 6. Output voltage and waveform

The EAD 01 -100 device server connects serial devices to Ethernet networks using the IP protocol family. The EAD 01 -100 connects devices through a TCP data channel or through a Telnet connection to computers or another Device Server. Datagrams can be sent by UDP. The EAD 01 -100 contains a web [http] server that allows presentation of custom content and can be easily configured through the server. The EAD 01 -100 has 2 programmable I/O pins/ Signals that can be used to monitor or control attached devices.

2.1 Features

The EAD 01 -100 device server based on a miniaturized version of a modular serial-to- Ethernet converter based on an existing Lantronix Xport Serial-to-Ethernet module. The EAD 01 -100 device server package contains a Xport Module which contains DSTni-LX controller, with 256K bytes of SRAM, 2KB of boot ROM, and integrated AMD 10/100phy, 4-Mbit flash memory, Ethernet Magnetic, power supply filters, reset circuit, a 25-MHz crystal (Ethernet), 48-MHz crystal (DSTni-LX) and Ethernet LED's. The EAD 01 -100 Board requires +5V power and is designed to operate in an extended temperature range.

2.2 Protocol Support

The EAD 01 -100 uses the Internet Protocol (IP) for network communications and the Transmission Control Protocol (TCP) to assure that no data is lost or duplicated, and that everything sent to the connection arrives correctly at the target.

Other supported protocols are ARP, UDP, TCP, ICMP, Telnet, TFTP, AutoIP, DHCP, HTTP, and SNMP for network communications and management.

TCP, UDP and Telnet for connections to the serial port.
TFTP for firmware and web page updates.
IP for addressing, routing and data block handling over the network.

User Datagram Protocol (UDP) for typical Datagram applications in which devices interact with other devices without maintaining a point-to-point connection.

SMTP for e-mail transmission.

The EAD block diagram is shown in Figure 7.

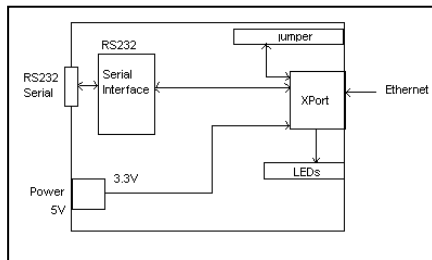
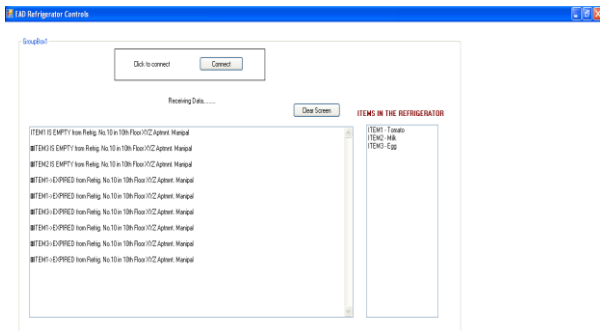


Fig 7. EAD 01-100 block diagram

3. RESULTS



The above screen shot shows the testing screen shot

4. DISCUSSION

The above display window is created using visual basic. Net software written in the computer situated at the shop or supermarket. The display window consist of connect button, clear screen button and items in the refrigerator box.

The connect button connects to the EAD 01-100 device. When the connection is success the message from the refrigerator displayed on the screen.

The clear screen button clears the message when the message is not necessary.

Items in the refrigerator box displays the different items in the refrigerator.

ITEM1, ITEM2, ITEM3, etc corresponds to Eggs, Vegetables, Fruits etc. are displayed on the Screen, this helps to shop owner to verify the stocks in the refrigerator. Consider messages "ITEM1 IS EMPTY from Refrig. No.10 in 10th floor XYZ Aptmnt Manipal" and "ITEM1 IS EXPIRED from Refrig. No.10 in 10th floor XYZ Aptmnt Manipal". Here messages "ITEM1 IS EMPTY" and "ITEM1 IS EXPIRED" are from the refrigerator when the item is over and when the item is expired. Message "from Refrig. No.10 in 10th floor XYZ Aptmnt Manipal" which is written in the software. When more than one intelligent refrigerator are used then this system required one network switch that is located at shop or super market. Each Ethernet adapter has particular IP address. This system reduces human intervention, therefore system helpful for busy persons and also used to store medicine for biomedical application. This Intelligent refrigerator finds out the stock of the material present in it and automatically places the order for the nearest online shop via internet using IEEE802.3U Ethernet technology if the stock is below threshold level. And at the same time the system will able to automatically send message informing the owner about the status of the refrigerator through Short Message Service (SMS). This project can further improved by using pressure sensor instead of IR sensor, which helps to send message at the different stages of the items when the items are over. As there are no existing product or prototype that displayed this system capability, may be it is commercially feasible.

4.1. Advantages

Completely automatic control through ARM processor

No extra accessories are required as it uses internet.

As this system uses online payment via credit/debit cards the chances of hiding the transaction from the government can also be avoided.

By interfacing the unit with a local computer, we may even generate the requisition forms as well as purchase orders with the help of software running in the local computer

4.2 Application

This system reduces human intervention and therefore this system is very helpful for busy persons. This system can also used to store medicine for biomedical application

5. CONCLUSION

This Intelligent refrigerator finds out the stock of the material present in it and automatically places the order for the nearest online shop via internet using IEEE 802.3U Ethernet technology, if the stock is below threshold level and at the same time the system will automatically send message, informing the owner about the status of the stock in refrigerator, through SMS.

This system reduces human intervention. The infrared emitters emit IR rays that are not able to pass through the transparent objects such as plain water. Thus, items that are transparent will not be detected by the system. With improvement in sensors, the proposed system will be made more robust in detecting status of the all types of items and also helps to send message at different stages of items stock.

6. ACKNOWLEDGMENTS

Our thanks to HOD of Department of E & C engineering for providing necessary infrastructure to carry out the work.

7. REFERENCES

- [1] Andrew N. Sloss, Dominic Symes, Chris Wright, 2006, "ARM Developer's Guide", Elsevier
- [2] Loh P.K.K., Let.D.Y.H. 2004, "A cost-effective space sensing prototype for an intelligent refrigerator", Control, Automation, Robotics and Vision Conference, 2004. ICARCV 2004.
- [3] Suhuai Luo, Jesse S. Jin, Jiaming Li, 2009, "A smart fridge with an ability to enhance health and enable better nutrition" International Journal of Multimedia and Ubiquitous Engineering, Vol. 4, No. 2. (2009), pp. 69-79.
- [4] Matthias Rothensee, 2008, "User acceptance of the intelligent fridge: empirical results from a simulation" Proceedings of the 1st international conference on the internet of things (IOT08)
- [5] T. Connolly, C. Begg, Database Systems, 2005, "A Practical Approach to Design, Implementation & Management" Addison Wesley, 4th Edition.
- [6] N. M. White, et al., 2007, "Sensors in Adaptronics, Springer Berlin Heidelberg", ISBN, 978-3-540-71965-6.
- [7] M. Wheeler, 2008, "Fridge Spreads The Word" <http://www.smarthouse.com.au/Appliances/Kitchen/E2M2L2C4>.
- [8] J. Li, G. T. Poulton, G. C. James, A. Zeman, P. Wang, M. Chadwick, and M. R. Piraveenan, 2007, "Performance of multi-agent coordination of distributed energy resources", WSEAS Trans. System and Control. 2007; 2(1):52-58.
- [9] J. Li, G. Poulton and G. James, 2007, "Agent-Based Distributed Energy Management", Proceedings of 20th Australian Joint Conference on Artificial Intelligence- AI07: Volume: 4830, pp569-578.
- [10] Chan, M., Esteve, D., Escriba, C., 2008, Campo, E., "Review of smart homes—Present state and future challenges", Computer Methods and Programs in Biomedicine, Volume 91, Issue 1, pp. 55-81.
- [11] R. Beuran, J. Nakata, T. Okada, T. Miyachi, K. Chinen, Y. Tan, Y. Shinoda, 2007, "Performance Assessment of Ubiquitous Networked Systems", 5th International Conference on Smart Homes and Health Telematics (ICOST2007), 2007, pp. 19-26.
- [12] L. Cerwinske, 2004, "Smart Home Design", Reed Press.
- [13] Elec Solutions, 2006, "Smart Home Solutions", www.electvision.com.au, 2006.
- [14] R. C. Elsenpeter, T. J. Velte, 2003, "Build your own smart home", McGraw-Hill.
- [15] D. Simmons, 2006, "Smart homes a reality in S Korea", http://news.bbc.co.uk/2/hi/programmes/click_online/6179868.stm.
- [16] L. Jiang, and B. Yang, 2004, "Smart Home Research", Proceedings of the IEEE International Conference on Machine Learning and Cybernetics, 2004.
- [17] C. E. Woteki and P. R. Thomas, 1992, "Eat For Life: The Food and Nutrition Board's Guide to Reducing Your Risk of Chronic Disease", National Academies Press, 1992.
- [18] J. Li, Y. Guo, and G. Poulton, 2004, "Critical Damage Reporting in Intelligent Sensor Networks", Proceedings of 17th Australian Joint Conference on Artificial Intelligence (AI 2004) vol. 3339, pp. 26-38, 2004.
- [19] N. King, 2003, "Smart Home-What do consumers want?" Intertek Research & Test Centre, 2003.
- [20] D. Christianson, 2005, "Home smart Home" http://www.researchworks.carleton.ca/2005_Spring/79.htm.